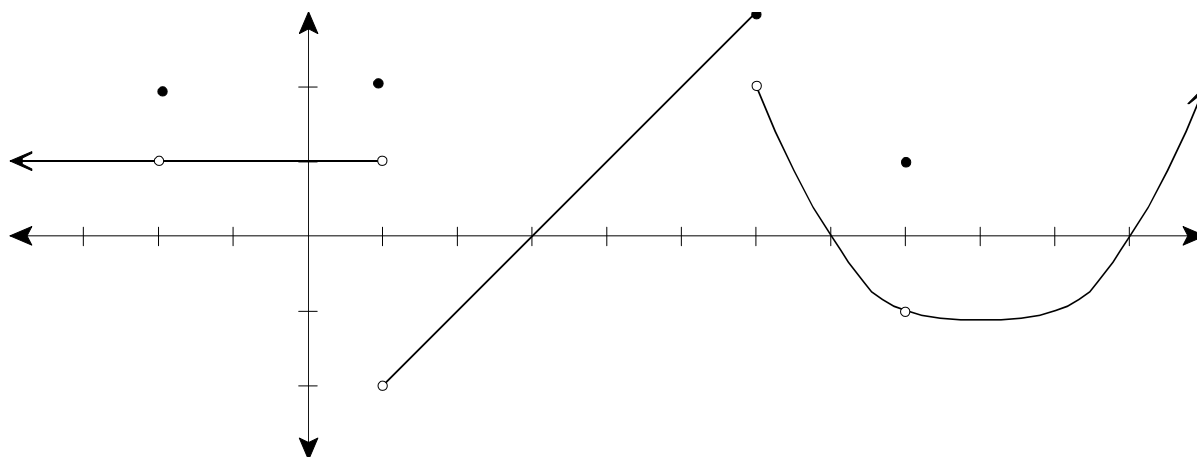


Quiz 1      Calculus 1      9/11/2012

Each problem is worth 1 point. Clear and complete justification is required for full credit.



Use the graph of  $f(x)$  shown above to answer the following questions:

1. What is  $f(-2)$ ?
2. What is  $\lim_{x \rightarrow -2} f(x)$ ?
3. What is  $\lim_{x \rightarrow 1^-} f(x)$ ?
4. What is  $\lim_{x \rightarrow 1^+} f(x)$ ?
5. What is  $\lim_{x \rightarrow 1} f(x)$ ?
6. What is  $f(1)$ ?
7. What is  $\lim_{x \rightarrow 6^-} f(x)$ ?
8. What is  $\lim_{x \rightarrow 6} f(x)$ ?
9. What is  $\lim_{x \rightarrow 6^+} f(x)$ ?
10. What is  $f(6)$ ?

