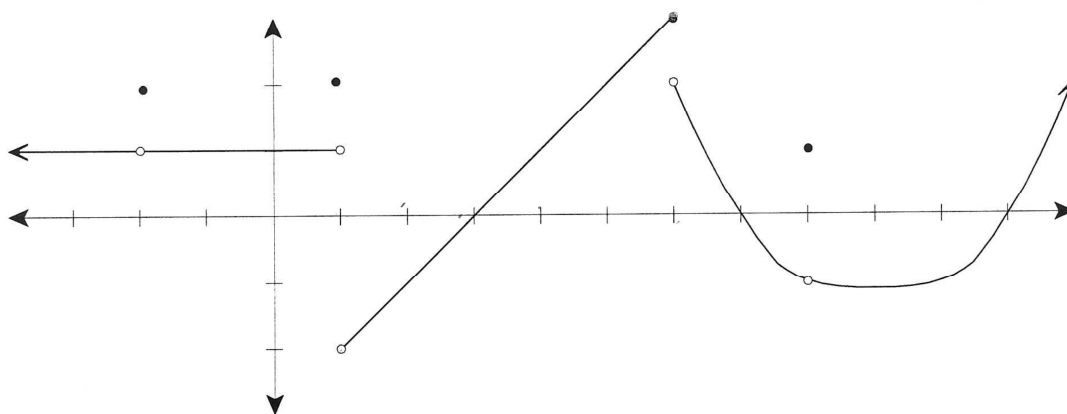


Quiz 1 Calculus 1 9/11/2012

Each problem is worth 1 point. Clear and complete justification is required for full credit.



Use the graph of $f(x)$ shown above to answer the following questions:

1. What is $f(-2)$? 2, that's where the dot is filled in
2. What is $\lim_{x \rightarrow -2} f(x)$? 1, where point is on the line.
3. What is $\lim_{x \rightarrow 1^-} f(x)$? 1
4. What is $\lim_{x \rightarrow 1^+} f(x)$? -2
5. What is $\lim_{x \rightarrow 1} f(x)$? one, points from left & right don't match
6. What is $f(1)$? 2
7. What is $\lim_{x \rightarrow 6^-} f(x)$? 3
8. What is $\lim_{x \rightarrow 6} f(x)$? one b/c the points from left & right don't match up
9. What is $\lim_{x \rightarrow 6^+} f(x)$? 2
10. What is $f(6)$? 3 where filled in dot is

Excellent!