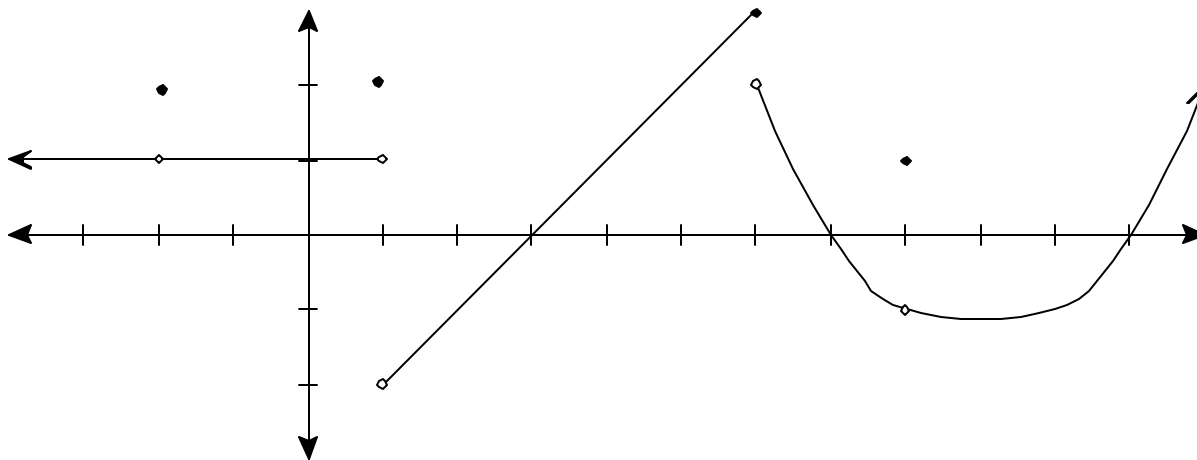


Quiz 3 Calculus 1 6/20/2006

Each problem is worth 5 points. Clear and complete justification is required for full credit.



Use the graph of $f(x)$ shown above to answer the following questions:

1. What is $\lim_{x \rightarrow -2} f(x)$?

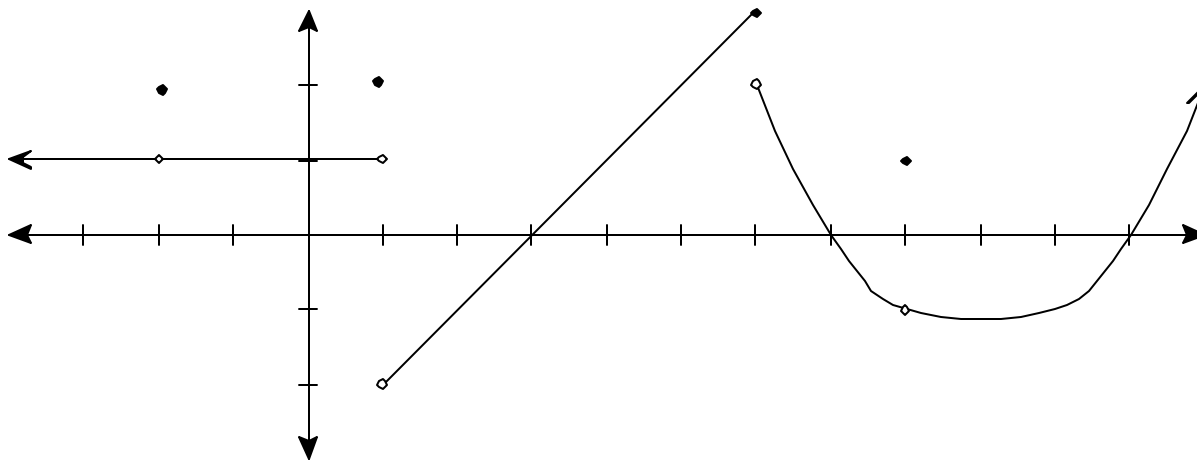
2. What is $\lim_{x \rightarrow 2^-} f(x)$?

3. What is $\lim_{x \rightarrow 6} f(x)$?

4. At which value(s) of x is $f(x)$ not continuous, and why?

Quiz 3 Calculus 1 6/20/2006

Each problem is worth 5 points. Clear and complete justification is required for full credit.



Use the graph of $f(x)$ shown above to answer the following questions:

1. What is $\lim_{x \rightarrow -2} f(x)$?

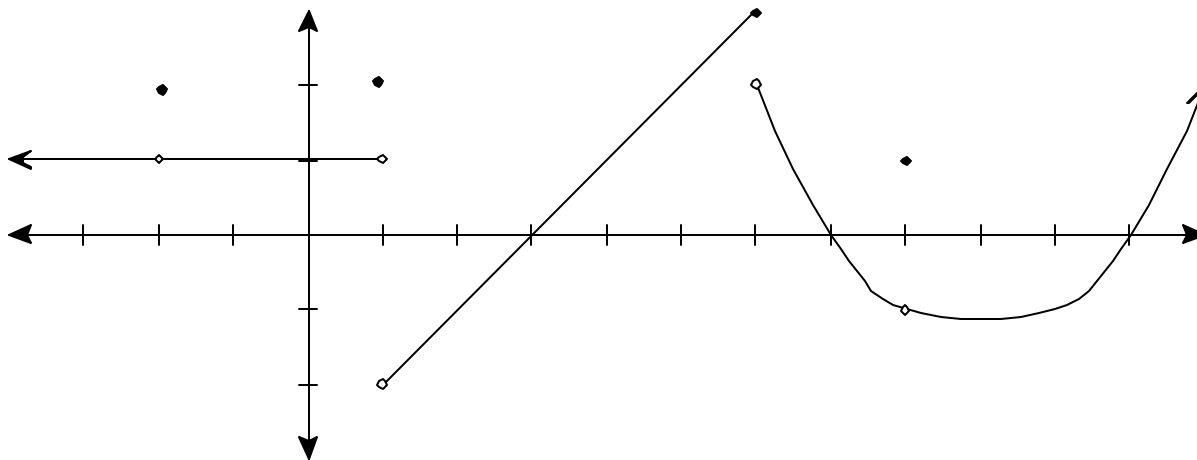
2. What is $\lim_{x \rightarrow 2^-} f(x)$?

3. What is $\lim_{x \rightarrow 6} f(x)$?

4. At which value(s) of x is $f(x)$ not continuous, and why?

Quiz 3 Calculus 1 6/20/2006

Each problem is worth 5 points. Clear and complete justification is required for full credit.



Use the graph of $f(x)$ shown above to answer the following questions:

1. What is $\lim_{x \rightarrow -2} f(x)$?

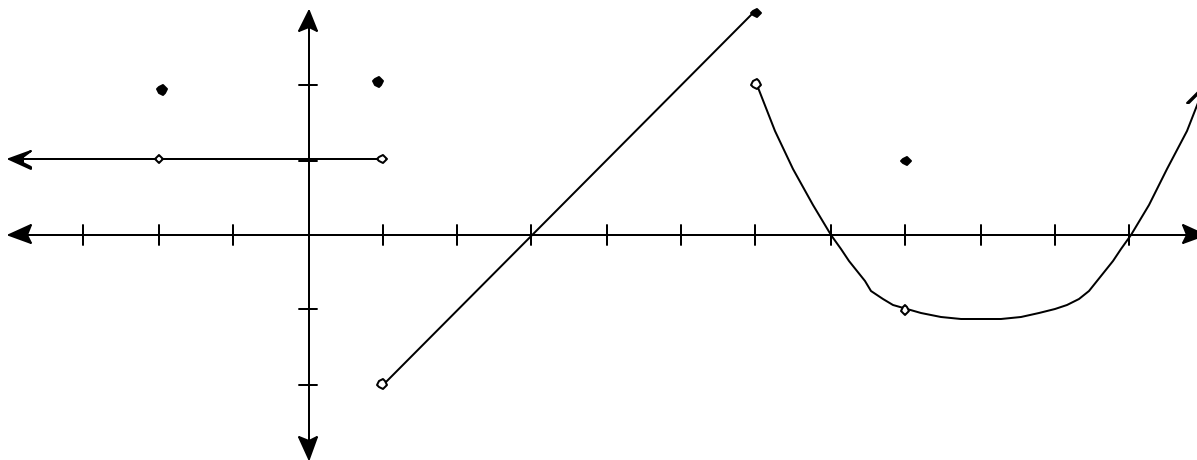
2. What is $\lim_{x \rightarrow 2^-} f(x)$?

3. What is $\lim_{x \rightarrow 6} f(x)$?

4. At which value(s) of x is $f(x)$ not continuous, and why?

Quiz 3 Calculus 1 6/20/2006

Each problem is worth 5 points. Clear and complete justification is required for full credit.



Use the graph of $f(x)$ shown above to answer the following questions:

1. What is $\lim_{x \rightarrow -2} f(x)$?

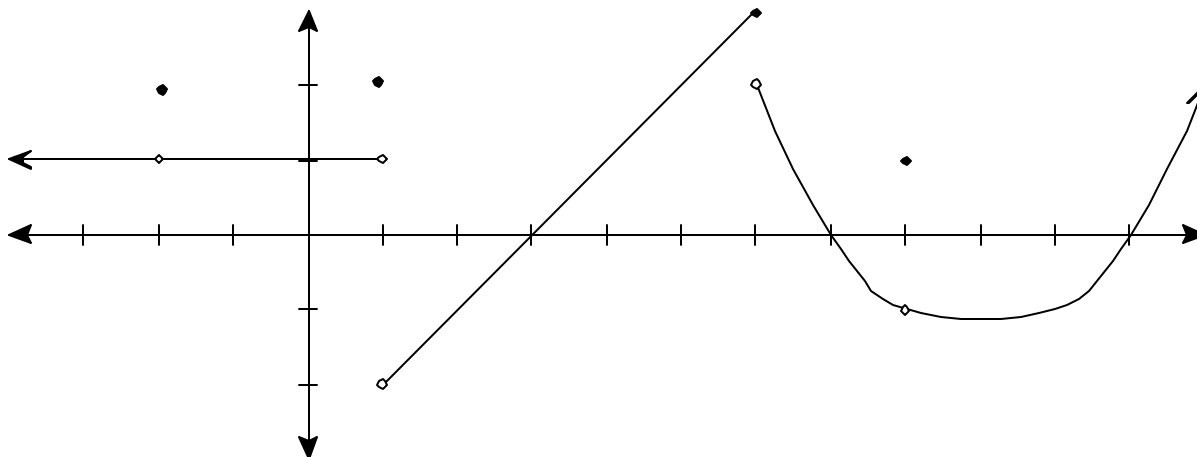
2. What is $\lim_{x \rightarrow 2^-} f(x)$?

3. What is $\lim_{x \rightarrow 6} f(x)$?

4. At which value(s) of x is $f(x)$ not continuous, and why?

Quiz 3 Calculus 1 6/20/2006

Each problem is worth 5 points. Clear and complete justification is required for full credit.



Use the graph of $f(x)$ shown above to answer the following questions:

1. What is $\lim_{x \rightarrow -2} f(x)$?

2. What is $\lim_{x \rightarrow 2^-} f(x)$?

3. What is $\lim_{x \rightarrow 6} f(x)$?

4. At which value(s) of x is $f(x)$ not continuous, and why?