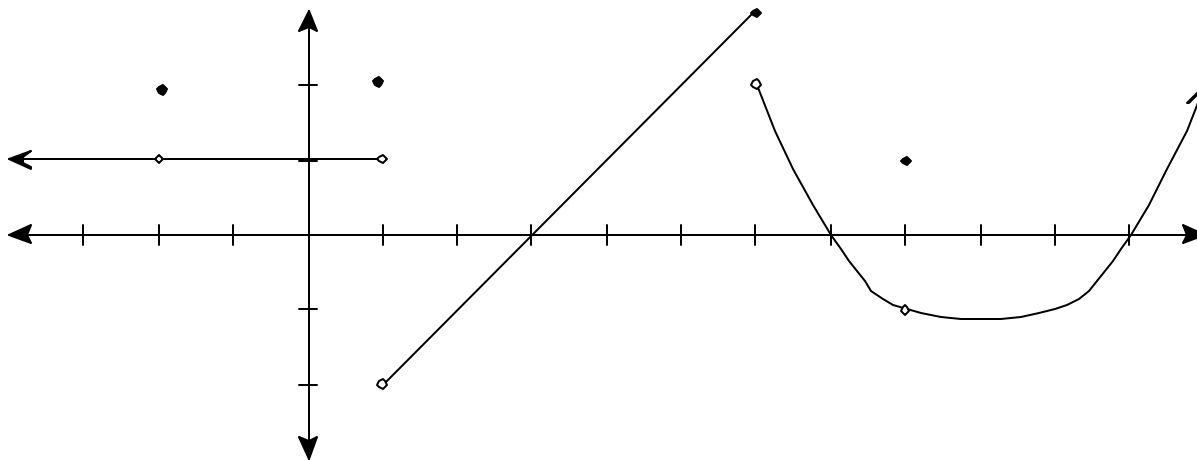


Quiz 2 Calculus 1 9/10/2007

Each problem is worth 2 points. Clear and complete justification is required for full credit.



Use the graph of $f(x)$ shown above to answer the following questions:

1. What is $f(-2)$?
2. What is $\lim_{x \rightarrow -2} f(x)$?
3. What is $\lim_{x \rightarrow 6^-} f(x)$?
4. What is $\lim_{x \rightarrow 6} f(x)$?
5. What is $\lim_{x \rightarrow 6^+} f(x)$?