

Each problem is worth 5 points. For full credit provide complete justification for your answers.

1. If θ is a second-quadrant angle for which $\sin \theta = 2/3$, what are

$$\cos \theta = \frac{-\sqrt{5}}{3}$$

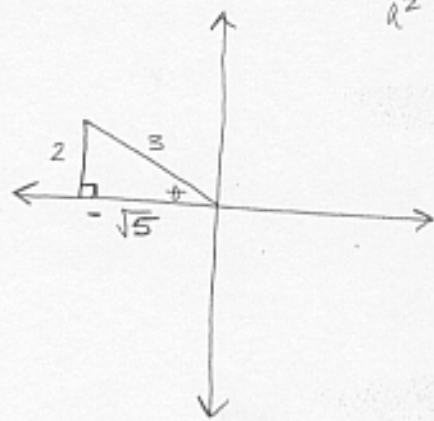
$$\tan \theta = \frac{-2}{\sqrt{5}}$$

$$\csc \theta = \frac{3}{2}$$

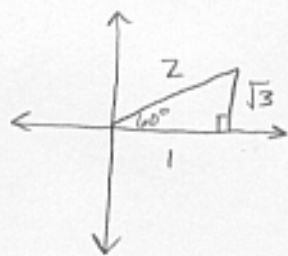
$$\sec \theta = \frac{-3}{\sqrt{5}}$$

$$\cot \theta = \frac{-\sqrt{5}}{2}$$

Great



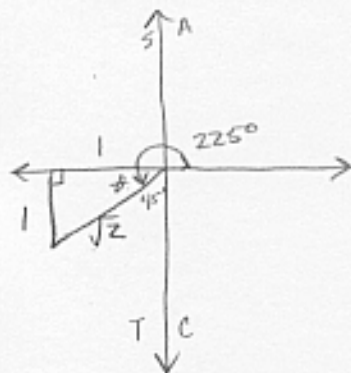
2. Give an exact value for $\sin 60^\circ$.



$$\sin 60^\circ = \frac{\sqrt{3}}{2}$$

Excellent

3. Give an exact value for $\cos 225^\circ$.



$$\cos 225^\circ = \frac{-1}{\sqrt{2}}$$

Nice!